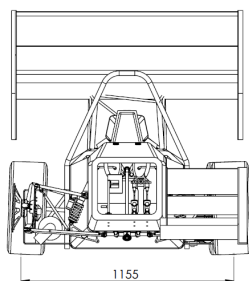
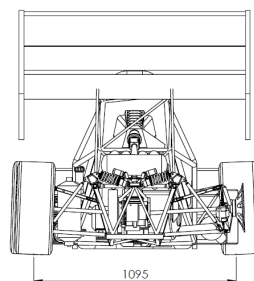


EDITH COWAN UNIVERSITY - TW7

FRONT VIEW



REAR VIEW

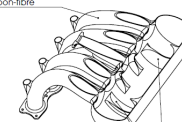


EDITH COWAN UNIVERSITY RACING			2012 ECUR TW7		
DRAWN	JG	07/09/2012	DATE	07/09/2012	VIEW
CHECKED	JG	17/09/2012	SCALE	1:14	SHEET 4 OF 4

EDITH COWAN UNIVERSITY - TW7 SIDE VIEW

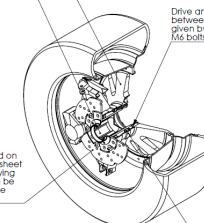
EDITH COWAN UNIVERSITY - TW7 PERSPECTIVE/SECTION VIEWS

Entire intake system comprised of ABS plastic wrapped in carbon-fibre



Aluminium hubs with steel inserts provide a high strength, low weight interface for transmitting torque

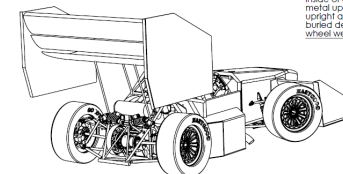
Tapered aluminium wheel centre offers a more direct load path during cornering, improving stiffness



Drive and clamping between wheel and hub given by six pins and six M6 bolts

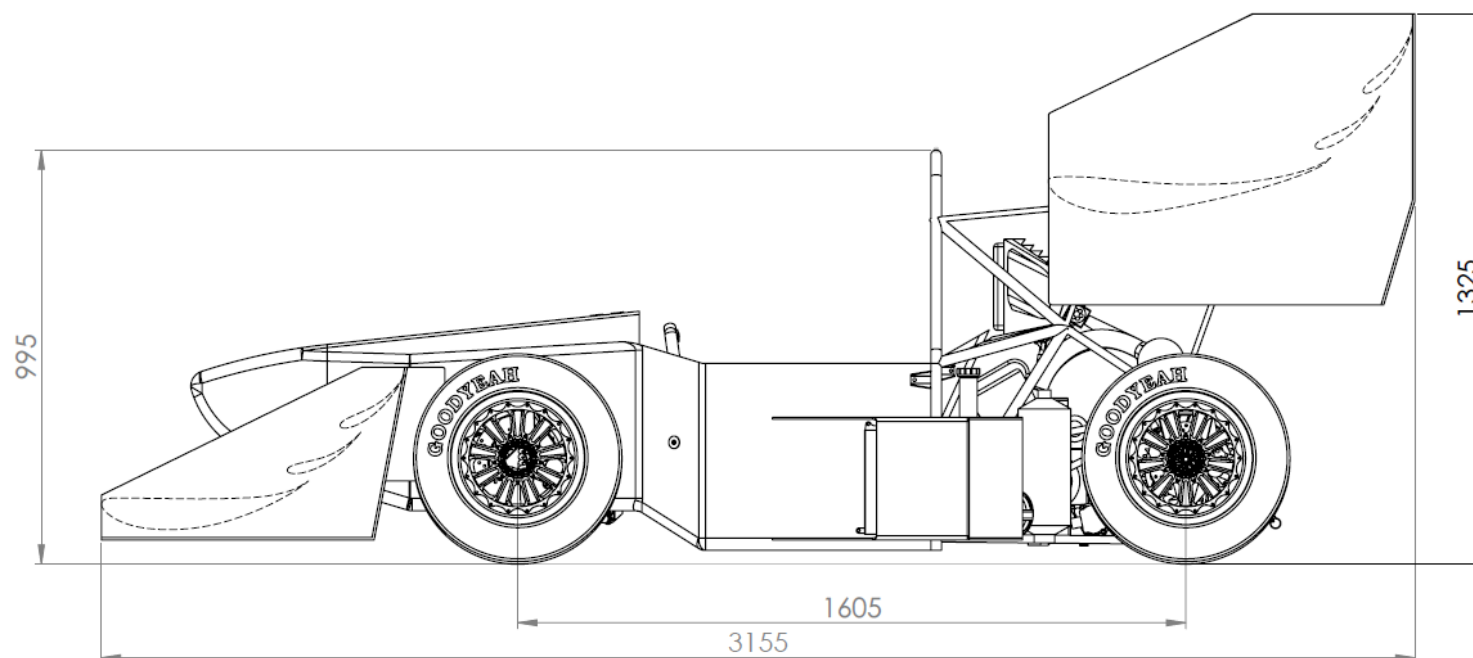
Plenum features radiused fins to even flow to the runners

Brake rotors situated on inside of alloy steel sheet metal upright, allowing upright assembly to be buried deeper inside wheel well



Two deep groove ball bearings allow rotation between upright and hub, preload provided using two Belleville springs

EDITH COWAN UNIVERSITY RACING			2012 ECUR TW7		
DRAWN	JG	07/09/2012	DATE	07/09/2012	VIEW
CHECKED	JG	17/09/2012	SCALE	1:14	SHEET 4 OF 4



EDITH COWAN UNIVERSITY RACING			2012 ECUR TW7		
DRAWN	JG	07/09/2012	DATE	07/09/2012	VIEW
CHECKED	JG	17/09/2012	SCALE	1:14	SHEET 4 OF 4